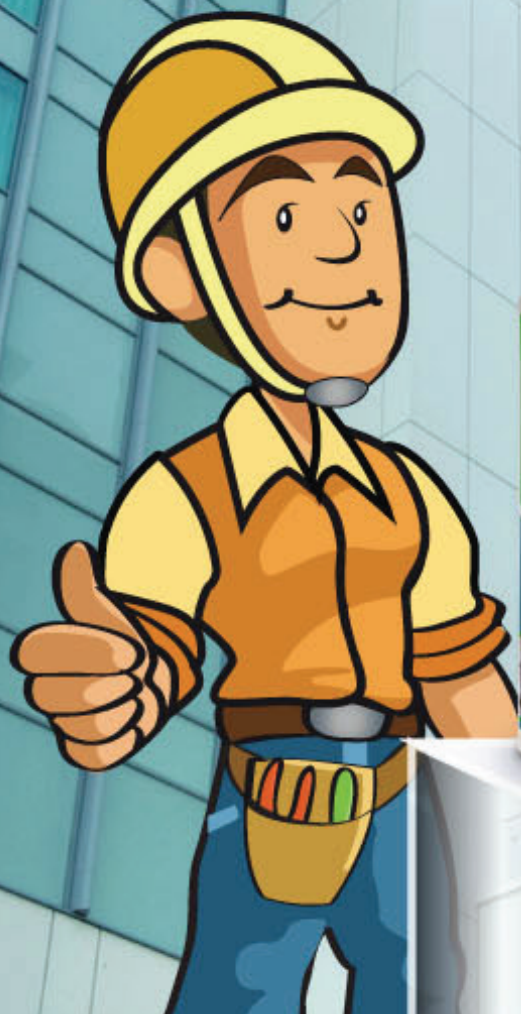


# **Bondit**

**Sealants and Adhesives**





## GASKET MAKER

**GASKET MAKER** is a high-performance silicone sealant developed for sealing, bonding and repairing works where heat resistance is required. It is an ideal sealant for high temperature construction applications. It reacts with atmospheric moisture to produce an elastic tough silicone.

### Properties:

Excellent heat resistance up to +250 °C permanently and up to 300 °C intermittently. %100 silicone. Fast cure, high strength Remains flexible at low (-40 °C) and high (+250 °C) temperatures. Will not crack, shrink or become brittle. One component, acetoxy cure, RTV silicone.

### Applications:

Sealing and bonding applications in automobiles. Industrial ovens. Sealing and bonding in stoves. In heating devices. Sealing heating systems. Gaskets in pumps and motors. Heating elements in appliances. In sealing chimneys. Other bonding and sealing applications where parts must perform at high temperatures.

## ACRYLIC SEALANT

**ACRYLIC SEALANT** is one-component universal acrylic sealant suitable for filling cracks and joints both indoors and outdoors. It's a cost-effective plastic-elastic sealant ideal for particularly static joints.

### Properties:

Over paintable. Can be used on all porous surfaces such as brick, concrete, wood etc. Very easy to apply and clean. Water-proof after curing. Resistant to weathering such as rain, snow and sunlight. Does not contain any solvents. No odour.

### Applications:

Sealing of low and medium movement joints between various construction materials (wood, concrete, brick etc.). Filling cracks in walls and on ceilings. Sealing joints between windows, walls, doors etc.



## AQUARIUM SILICONE SEALANT

**AQUARIUM SILICONE SEALANT** is a non-toxic, solvent-free silicone sealant for use in aquarium construction and glazing applications. It's a high-quality acetic curing system based silicone sealant featuring excellent adhesion to glass and many other non-porous surfaces.

### Properties:

%100 silicone. Very good bond and physical strength. Rapid curing. Non-toxic to fish. One component, cures with atmospheric moisture. Keep its elasticity at low and high temperatures. Does not crack, discolour or shrink. Resistant to many chemicals. Resistant to UV radiation.

### Applications:

Bonding, sealing and repairing of aquariums. Construction of glass structures, silos and containers. General glazing and glass works. Glazing on aluminum frames and shop displays. Sealing of windows. Universal building and construction joints. Sealing of ventilation, heating and air-conditioning systems.



## SHOWER CABINE KITCHEN&BATHROOM SILICONE SEALANT

**SHOWER CABINE KITCHEN & BATHROOM SILICONE SEALANT** is a specially formulated acetoxo based sanitary silicone sealant for use in production and installation of shower cabins. It's a superior sealant featuring excellent adhesion and durability.

### Properties:

%100 silicone, does not contain any solvent. Cures very fast. Antibacterial. Almost no shrinkage. Stays bright and clean. Outstanding resistance to mildew and fungus. Resistant to temperature extremes and aging. Does not crack or discolor. Withstands detergents, cleaning agents and chemicals. Acetoxo curing system.

### Applications:

Glazing and bonding in shower cabinets during production. Filling joints between tiles, tub and shower cabin during installation. Filling joints between bath tubs and tiles. Waterproofing sinks. Sealing around bathroom fixtures.



## UNIVERSAL SILICONE SEALANT

**UNIVERSAL SILICONE SEALANT** is an acid-curing, one-component silicone sealant for a range of general sealing and glazing applications. It's suitable for use on common non-porous building materials.

### Properties:

Stays permanently elastic after curing. Acetoxo curing system. Antibacterial. Very good adhesion on common building materials and non-porous surfaces. Resistance to aging, cracking and discoloring. Resistant to many chemicals, cleaning agents and detergents. Can be applied in any season. Typical acetic smell during curing.

### Applications:

General sealing and glazing applications. Sealing around windows and doors. Sealing in DIY applications. Sanitary applications. Connection and expansion joints. Sealing electric, telephone etc. sockets and switches.



## FOAM CLEANER

**FOAM CLEANER** removes fresh PU foam and cleans the PU foam gun after the application. Cleans surfaces, clothes, window & door frames and prevents the foam cure in the foam gun.

### Properties:

Designed specially for cleaning the foam gun. Cleaner has a spray valve for removing the foam from the gun adapter. It can be used in all positions. Propellant gas is not harmful to the ozone layer.

### Instructions:

Screw the can tightly onto the gun and spray through the gun. Clean the gun; when the period between two applications is more than a week, after removing the can from the gun without replacing it with a new can. Can also be used through the attached spray nozzle.



## POLYURETHANE SEALANT (Automotive)

**POLYURETHANE SEALANT (AUTOMOTIVE)** is a one-component, high-modulus polyurethane sealant that cures on exposure to atmospheric humidity. It possesses excellent adhesion to sheet iron, aluminum, stainless steel, lead, copper, ceramic, glass, wood and various plastic materials.

### Properties:

Solvent and PVC free. Good U.V. resistance. Permanently flexible. Non-sag consistency - Exceptional thixotropy. Non-sticky / does not pick up dirt. Odourless. No change in volume - No shrinkage. Improved storage stability. Easy to gun, can be easily smoothed. Over-paintable.

### Applications:

Body construction of cars, containers, caravans etc. Sealing and bonding of ventilation ducts, gutters and spouts etc. Sealing of sheet metal seams. For vibration reduction in all type of sheet metal. Assembly works. Sealing against water, air, gas and dust.



## POLYURETHANE SEALANT (Construction)

**POLYURETHANE SEALANT (CONSTRUCTION)** is a one-component, medium-modulus polyurethane sealant that cures on exposure to atmospheric humidity. It possesses excellent adhesion to all typical construction materials such as cement based materials, brick, ceramic, glass, wood, galvanized and painted sheet iron and various plastics.

### Properties:

Solvent and PVC free. Good UV resistance. Permanently flexible. Non-sag consistency - Exceptional thixotropy. Non-sticky / does not pick up dirt. Odorless. No change in volume - No shrinkage. Improved storage stability. Easy to gun, can be easily smoothed. Over-paintable.

### Applications:

Expansion joints between many different construction materials. Bonding of roof tiles. Installation of PVC window frames. Connection joints between wood window- and doorframes and walls. Joints between prefabricated construction materials. Sealing and bonding of ventilation ducts, gutters and spouts etc. For expansion joints between pre-cast concrete panels.





## CHEMICAL ANCHOR

**CHEMICAL ANCHOR** is a quick curing reaction resin mortar for high loads in almost all building materials. It is used with special application gun and static mixer.

### Properties:

Excellent bonding of the mortar enables very high loads in concrete. It can be used in many types of solid Stones. Secure anchoring in hollow bricks. It cures rapidly. Scaled cartridge enables accurate dosage of the compound. Non-sagging; It can be applied vertically. Resistant to permanent temperature of 80 °C (Temporary 110 °).

### Applications:

Heavy load-carrying attachments in solid stone and concrete. Repair mortar or adhesive mortar for concrete components. Attachment of anchor rods, threaded collars, reinforcement bars, profiles etc. Medium-load applications in hollow-bricks.



## EXPRESS MONTAGE ADHESIVE

**EXPRESS MONTAGE ADHESIVE** is a single component, fast curing polyurethane based adhesive it combines high bond strength with fast curing. It's used to bond almost all common building materials.

### Properties:

Fast curing. Low press time. Transparent. Extremely high bond strength on numerous substrates. Thyrotrophic, non-sag, ideal for vertical joints. Low consumption, economical. Good filling properties. Conforms to D4 according to DIN EN 204. Easy to use. User friendly: allows repositioning. Very good resistance to chemicals. Excellent resistance to moisture and weather conditions. No shrinking. Low odour. Useable in slightly wet substrates.

### Applications:

It is suitable for use in construction and repair applications where a permanent strong bond is required between porous-porous and porous-nonporous surfaces. It can be used for bonding to various kinds of construction materials such as wood, MDF, concrete, metal, polystyrene and polyurethane foam, PVC, marble, granite, polycarbonate, glass and ceramic etc.

## PU ADHESIVE FOAM

**PU ADHESIVE FOAM** is one component aerosol polyurethane adhesive foam curing swiftly with moisture. Providing very fast and powerful adhesion for various construction materials, especially highly recommended for heat insulation systems.

### Properties:

Powerful adhesion of polystyrene heat panels (XPS and EPS). Instant adhesion and wall plugging. within two hours. More economical. Ready to use in aerosol can. Minimum 6 m2 heat insulation panel adhesion for each can. Minimum expansion during drying period. After dried, no further expansion and shrinkage. A lighter material compared to plaster, alternative material, used in heat insulation systems. No more extra burden or weight to building. High yield up to 55 liters, depending on the humidity and temperature. Fire Class: E (According to EN 13501-1. It refers to B2 for DIN 4102 Part-1 ). Usable at low temperature like 0 °C. It does not contain any propellant gases which are harmful to the ozone layer.

### Applications:

Best for mounting heat insulation panels and filling voids during adhesive application. Advised for wooden type construction materials adhesion to concrete, metal etc. Applications needed minimum expansion. Mounting and isolation for frames of windows and doors.



## MULTI PURPOSE PU FOAM

**MULTI PURPOSE PU FOAM** is a single-component, moisture-curing and self-expanding aerosol polyurethane foam. It is designed for easy dispensing through the straw adapter included with each can. It does not contain any propellant gases that are harmful to the ozone layer.

### Properties:

Excellent adhesion & filling capacity and high thermal & acoustical insulation value. Excellent mounting capacity and stability. Adheres to almost all building materials with the exception of surfaces such as polyethylene, Teflon, silicone and surfaces contaminated with oils and greases, mold release agents and similar materials. Mould-proof, water-proof, over paintable. Cured foam dries rigid and can be trimmed, shaped and sanded.

### Applications:

Fixing and insulating of door and window frames. Filling and sealing gaps, joints and cavities. Filling of penetrations in walls. Insulating electrical outlets and water pipes.





## MDF KIT ACTIVATOR & GLUE

**MDF KIT** is an adhesive set which consists of high viscosity cyanoacrylate adhesive and activator.

### Properties:

High bonding strength. Suitable for use on vertical surfaces as it will not drip or slump. It is particularly suited to bonding difficult substrates which have a porous or uneven nature since it increases bonding strength by preventing the adhesive to be absorbed by the surface.

### Applications:

It is particularly used for fixing and repairing wooden parts. Suitable for MDF, wood, chip wood, rubber, most plastics, leather etc. Especially suitable for the applications where cure speed needs to be accelerated.

## MARINE ADHESIVE

**MARINE ADHESIVE** is a one-component polyurethane wood adhesive. It cures with moisture in the air and in the wood.

### Properties:

Easy application, low viscosity. Excellent bond strength. Fast drying. Water resistant (D4-DIN EN204). Can be used on slightly humid surfaces. Resistant to temperature extremes. Resistant to moisture and chemicals.

### Applications:

Fixing and gluing wooden elements to other various porous and non-porous elements as wood, metal, concrete, polystyrene foam and other plastics. Furniture and boat production. All bonding applications that need a high water resistance.

